

Anchor Handling Tug / Supply Vessel RESOLUTE



GENERAL

Port of Registry / Flag	: Ulaan Bataar / Mongolia
Year Built	: 2003
Builder	: Muhibbah Marine Eng. S/B
IMO No	: 9298090
Owner	: Ocean Towage Solution Sdn Bhd
Manager	: Y & Y Maritime Management & Consultancy Sdn Bhd
Classification	: Bureau Veritas
	I + HULL + MACH
	Supply vessel ; Fire fighting ship 1 ;
	Special service / Anchor Handling
	Unrestricted navigation
Dimension L x B x D	: 59.2m x 13.8m x 5.5m
Draft	: 4.75m
GRT/NRT	: 1075/352
GWT	: 1396.74mt

CARGO CAPACITY

Fuel Oil	: Approx. 470m ³
Potable Water	: Approx. 203m ³
Drill Water	: Approx. 203m ³
Base Oil	: Approx. 160 m ³
Liquid Mud	: Approx. 160m ³
Dry Bulk (4Nos.)	: Approx. 136 m ³
Deck Cargo	: 500 tonnes
Deck Strength	: 5 tonnes/m ²
Clear Deck Space	: 330m ²

REFRIGERATED STORAGE

Freezer/Cold Room	: Approx.11.03 m ³
Chiller/Cooled Room	: Approx.16.5 m ³

ACCOMMODATION (Fully Air-Conditioned)

Crew	: 16 men
Passenger	: 12 men

NAVIGATION & COMMUNICATION

Doppler Speed Log	: 1 x FURUNO
Radar	: 2 x Furuno FR-2115/1505
Gyro Repeater	: 1 x Yokogawa
Navtex Receiver	: 1 x FURUNO NX-500
EPIRB	: MCMURDO E3
Autopilot	: 1 x YOKOGAWA
GPS Navigator	: 1 x FURUNO GP-31
Echo Sounder	: 1 x FURUNO FE-606
Walkie Talkie	: 3 unit
AIS/SSAS	: 1 unit each
VHF Transceiver	: 2 x FURUNO FS-1503

ANCHOR HANDLING EQUIPMENT

Winch	: 1 x Anchor and Towing Winch - Zicom
Line Pull	: 150T
Brake	: 180T
Drum Wire Cap.	: 1000m x 52mm wire
Spare reel	: 1 unit
Tugger Winch	: 2 x 10T@15m/min Zicom
Shark Jaw	: 1 Schematic Hydraulic SWL 300T
Guide Pin	: 1 Schematic Hydraulic SWL 180T
Capstan	: 2 x 5T @ 0-15m/min ZICOM
Stern Roller	: 1.45mØ x 3.5m 150 tonnes SWL

MAIN MACHINERY & PROPULSION

Main Engine	: 2 x 2750BHP, DEUTZ
Auxiliary Engine	: 3 x CAT 3406 215Kw
Emergency A/E	: 1 x CAT 3304, 50 kw.
Propulsion	: 2 x BERG CPP.
Bow Thruster	: 1 x 6.5T (azimuth thruster)

ANCHOR & CRANES

Anchor	: 2 x 1440Kg
Chain	: 2 x 15Lengths x 36mm dia
Deck Crane	:HLRM 35/2S x 3T

CARGO PUMP CAPACITY

Fuel Oil	: Approx. 100m ³ /hr @ 60m head
Potable Water	: Approx. 80m ³ /hr @ 60m head
Drill Water	: Approx. 100m ³ /hr @ 60m head
Liquid Mud	: Approx. 95.4m ³ /hr @ 22m head
Base Oil	: Approx. 100 m ³ /h @60 m TH.
Ballast	: Approx. 100 m ³ /h @ 2925 RPM.
Dry Bulk Compressor	: 2 x airman package screw compressor..

FIRE FIGHTING (FIFI 1) & ANTI-POLLUTION

Pump	: 2 x Harmworthy 1500m ³ /hr
Monitor	: 2 Units
Sprinkler System	: Double section,one stage,aux; split.
Oil Dispersant Boom	: Teco/D160 MP/415/3/50.
Oil Dispersant Tank	: 13 m ³

BOLLARD PULL

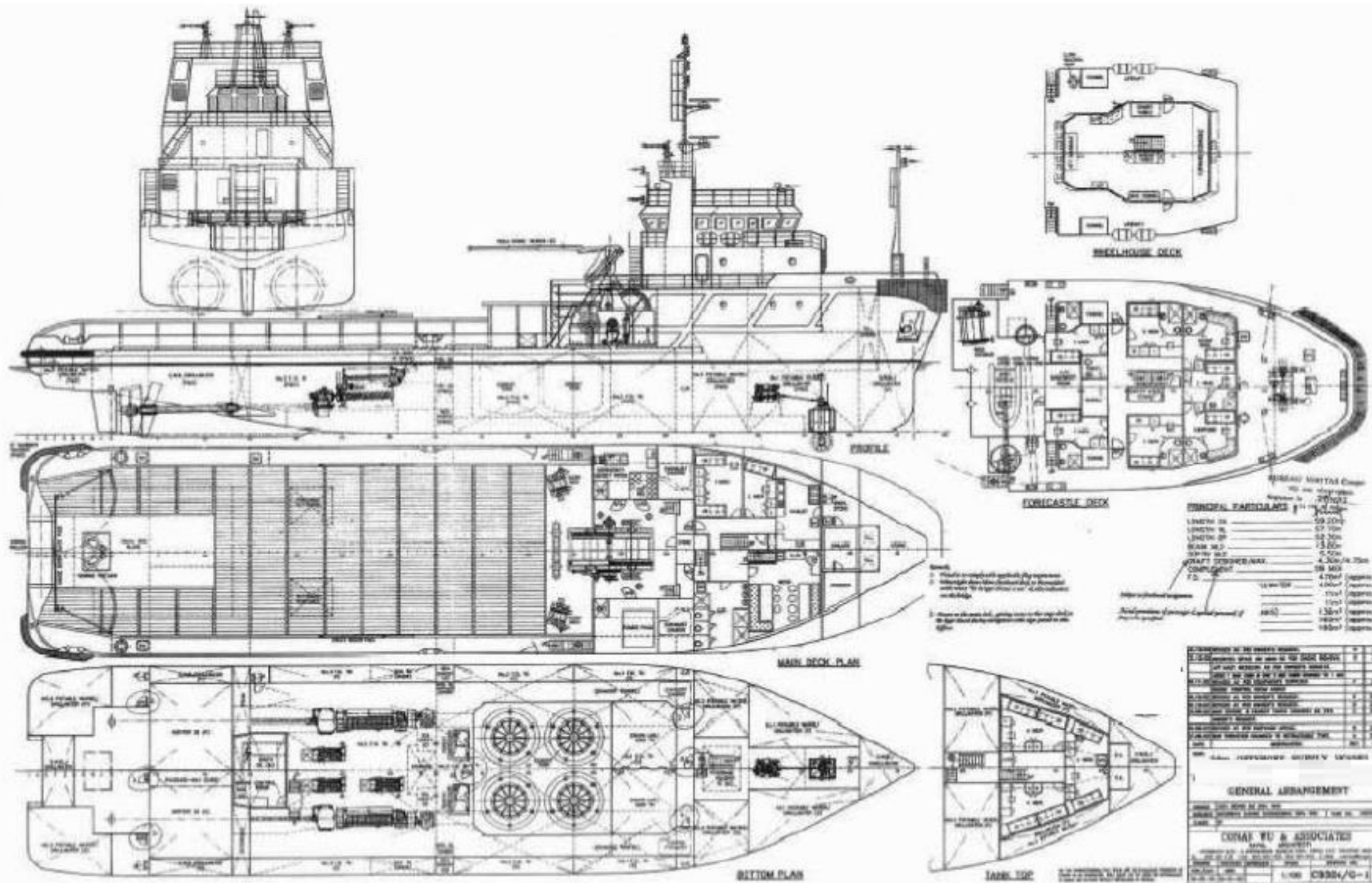
Approx 75 tons

SPEED

Maximum Speed	: 12 knots @ 100% MCR
Economical Speed	: 10 knots @ 85% MCR

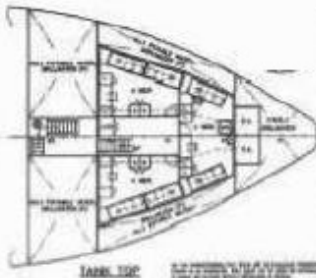
ENDURANCE

25 days



GENERAL PARTICULARS

LENGTH OVER	100'-0"	(approx.)
LENGTH W.	27'-0"	(approx.)
LENGTH DP	98'-0"	(approx.)
BEAM	33'-0"	(approx.)
DRAFT	10'-0"	(approx.)
DRAFT FORECASTLE	4'-0"	(approx.)
DISPLACEMENT	1000	(approx.)
GROSS TONNAGE	4700	(approx.)
NET TONNAGE	4000	(approx.)
REGISTERED TONNAGE	1000	(approx.)
NET TONNAGE	1000	(approx.)
NET TONNAGE	1000	(approx.)
NET TONNAGE	1000	(approx.)
NET TONNAGE	1000	(approx.)



GENERAL ARRANGEMENT

SHIP NAME: **COYOTE**

SHIP TYPE: **COAST GUARD**

DESIGN NO: **1000**

DATE: **1/10/50**

SCALE: **1/4" = 1'-0"**

DESIGNED BY: **W. W. WOOD**

CHECKED BY: **W. W. WOOD**

APPROVED BY: **W. W. WOOD**

COYOTE WOOD & ASSOCIATES
 1000 BAYVIEW DRIVE
 SAN FRANCISCO, CALIF.